

B&C SAFRAN PURE /WOMEN - PW 455



SKINNY FIT

- Polo a maniche corte in Piqué
- Collo e polsini a coste 1x1
- Placchetta 2 bottoni tono su tono
- Taglio femminile
- Cuciture laterali
- Nastro di rinforzo



BROWN
* COLORI DISPONIBILI IN 2XL

100% cotone ring-spun **pettinato preristretto**
HEATHER GREY: 90% COTONE RING-SPUN PETTINATO PRERISTRETTO / 10% VISCOSA

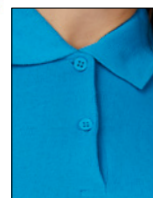
Fine Piqué

180 g/m²

XS - S - M - L - XL - 2XL*

5 pz/pacco & 50 pz/cartone

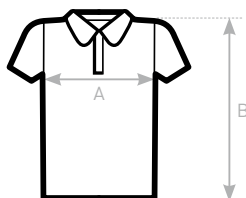
* DISPONIBILE SOLO IN WHITE, BLACK, NAVY, RED, SKY BLUE, ROYAL BLUE, BOTTLE GREEN E HEATHER GREY



DUO
CONCEPT

con B&C Safran

ESISTE KIDS: IN B&C SAFRAN /KIDS



SIZES [CM]

B&C SAFRAN PURE /W. PW 455	XS	S	M	L	XL	2XL	3XL
A HALF CHEST	40,5	43	45,5	48	50,5	53	-
B BODY LENGTH FROM NECK POINT	56,5	58	59,5	61	62,5	64	-



OEKO-TEX®
CONFIDENCE IN TEXTILES
STANDARD 100
1501003 Centexbel
Tested for harmful substances.
www.oeko-tex.com/standard100