
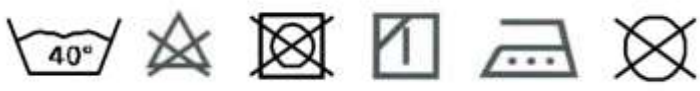


**Scheda tecnica indumento/Garment technical data sheet. 5585.00**


Identificazione articolo/Item identification					
Cod. comm.le Industrial Starter/ IS commercial item code:	<b>5585</b>	Cod. art. fornitore/ Supplier item code:	<b>BR 07872</b>	Cod. fornitore/ Supplier code:	<b>101041</b>
Cod. colore Industrial Starter/ Industrial Starter colour code:	<b>040</b> (blu marino / navy blue )	<input checked="" type="checkbox"/>	Articolo del catalogo/Item from catalogue		
		<input type="checkbox"/>	Articolo personalizzato/Customized item		
		Codice cliente/Customer code:		<b>N/A</b>	
Nome articolo/Item name:	<b>Felpa permanente " M-PRO" / " M-PRO" permanent sweat shirt</b>				

Descrizione tecnica dell'articolo/Technical item description			
	Composizione tessuto/ Fabric composition	Colore/colour (Pantone)	Peso del tessuto/ Fabric weight [g/m <sup>2</sup> ]
Tessuto esterno principale / Main outer shell fabric	<b>60% modacrilico 39% cotone 1% fibre in carbonio dissipative / 60% modacrilic 39% cotton 1 % antistatic carbon fiber</b>	<b>Blu marino / Navy Blue</b>	<b>300 +/- 5%</b>
Tessuto interno ( fodera interna anteriore) / Inner fabric ( front inner lining )	<b>100% cotone twill / 100% cotton twill</b>	<b>Rosso / Red</b>	<b>260 +/- 5%</b>
Accessori/Accessories:	<ol style="list-style-type: none"> <li><b>1. Metal free</b></li> <li><b>2. Carrè posteriore a strato singolo / One layer back yoke</b></li> <li><b>3. Collo a lupetto in tessuto doppio / Double layer mock turtle neck</b></li> <li><b>4. Chiusura centrale con zip in plastica coperta da doppia pattina interna ed esterna / Central closure with plastic zipper covered by double inner and outer flap</b></li> <li><b>5. Pattina esterna centrale con chiusura a velcro / Central outer flap with velcro closure</b></li> <li><b>6. n. 2 tasche al petto e n. 2 tasche in vita chiuse con zip in plastica e coperte da pattine con velcro / n. 2 chest pockets and n. 2 waist pockets with plastic zipper and covered by flaps with velcro</b></li> <li><b>7. Maniche a giro / Rounded sleeves</b></li> <li><b>8. Polsini con elastico / Elastic cuffs</b></li> <li><b>9. Fondo con elastico / Bottom with elastic</b></li> <li><b>10. Fodera anteriore in tessuto rosso per una migliore protezione alla saldatura / Front inner lining in red fabric for better protection against welding</b></li> </ol>		

**Scheda tecnica indumento/Garment technical data sheet. 5585.00**

Loghi e/o ricami/ Logos and/or embroideries:	 <b>ISSA LINE M-PRO PERMANENT</b>
Taglie/Sizes:	S, M, L, XL, XXL, XXXL
Imballo/Packages:	n. 1 pz per polybag – n. 10 pz per cartone / n. 1 piece per polybag- n. 10 pcs per export carton
Istruzioni lavaggio/ Care label:	 Stirare a 200° C dopo ogni lavaggio / Ironing at 200° C after each washing

**Conformità alle norme CE/Conformity with EC standards**

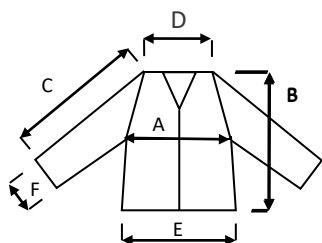
Cat.DPI/ PPE Category:	III	Norme CE e livelli di protezione/ EC standards and protection levels:	<b>UNI EN ISO 11612:2015 ( A1-A2-B1-C2)</b> <b>UNI EN ISO 11611:2015 ( Class 1 – A1-A2)</b> <b>UNI EN 1149-5:2018</b> <b>UNI EN 13034 : 2009 Type PB (6)</b> <b>IEC 61482-2:2018 APC 1</b> <b>EN ISO 13688:2013</b>
			<b>Direttiva ATEX / ATEX Directive</b> 
Lingue nota Informativa/ Manufacturer's notes languages:	IT,EN, ES, FR,PL,CZ,GR		







**Misure delle taglie/Size measurements [cm]**

	S	M	L	XL	XXL	XXXL
A. Torace / Chest:	55,5	58,5	61,5	64,4	68,5	72,5
B. Lunghezza tot. ( centro dietro)/ Tot. length ( centre back length) :	69	70	72	74	76	78
C. Manica / Sleeves:	56,5	56,5	58	59	60,5	62
D. Shoulder	48	49	50	51	52	53
E. Fondo / Bottom:	47	50	53	56	60	64
F. Polsino / Sleeve opening:	10	10,5	11	11,5	12	12,5
Giro manica / Armhole	26,5	27	28	29	30	31,5

Scheda tecnica indumento/Garment technical data sheet. 5585.00

Disegno e foto/Drawing and photo



NORME / NORMS	Permanent	Permanent	Permanent	Permanent		Permanent
						
	UNI EN ISO 11612:2015 A1-B1-C2	ISO 11611:2015 Class 1 – A1 – A2	UNI EN 1149-5:2018	IEC 61482-2 2018 APC 1	UNI EN 13034 Type 6	Atex
Cicli di lavaggio / Washing cycles	5 a	5 a	5 a	5 a	5 b	5 a
<p>a: potenzialmente infiniti / potentially endless  b: stirare @200C° dopo ogni lavaggio / ironing @200 C° after each washing – si può ripristinare trattamento durante lavaggio / during washing it's feasible restore treatment</p>						

Vicenza, 20/11/2019



Resp. acquisti/Purchasing manager