

D.P.I.: EN ISO 20345:2011

MADE IN: CHINA

SIZE: 36/48 (UK 3½ - 13)

PICTURES

DESCRIPTION

CERTIFICATION S1P

Low-cut S1P sneaker-style safety footwear, with eva midsole and multigrip rubber tread, velour microfibre upper and breathable micro-perforated fabric. convenient for all uses.

FEATURES

CERTIFICATION:

S1P - SRC

TOE CAP:

in non-magnetic composite, insulating, resistant to 200J.

ANTI-PERFORATION INSOLE:

made from zero-perforation textile fibre.

SOLE:

EVA midsole and nitrile rubber tread with energy absorption on heel.

REMOVABLE INSOLE:

antistatic in PU with ergonomic thermoforming.

LINING:

breathable micro-perforated 3D fabric.

UPPER:

in velour microfibre and breathable micro-perforated fabric. Additional colored laces included.

INSOLE

07527tgA2BM



07527tgBM6F



07527tgNRNR



07527tgVSLI



07527/MRtgBM



INSOLE in PU with ergonomic thermo-forming

07527tgA2BM


additional laces
Light Blue

07527tgBM6F


additional laces
Navy Blue

07527tgNRNR


additional laces
Dark Grey

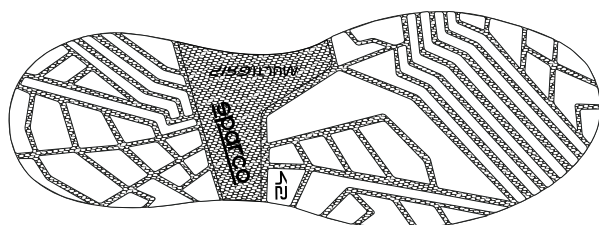
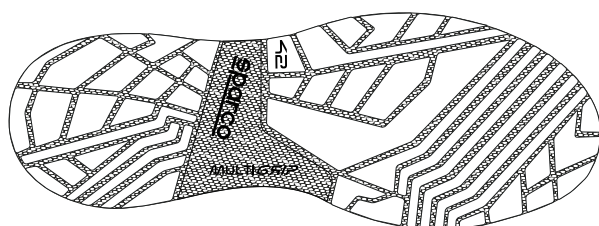
07527tgVSLI


additional laces
Dark Green

07527/MRtgBM


additional laces
Red

OUTSOLE



EVA midsole and nitrile rubber tread with energy absorption on heel. with energy absorption in the heel. Antistatic and resistance to oils and hydrocarbons.

D.P.I.: EN ISO 20345:2011

MADE IN: CHINA

SIZE: 36/48 (UK 3½ - 13)

USER MANUAL



FRONT

BACK

USER MANUAL MULTILANGUAGE (IT, EN, ES, DE, FR, BG, CS, DAN, EL, EST, FIN, HR, HUN, LETT, LIT, NL, POL, PT, RO, SK, SL, SVE, TR)
size 120 x 165 mm

LABELS

**LOGOS**

micro-injected onto the upper
(Sparco on the back and on side,
GYMKHANA on side-back)

COMPOSITION LABEL

sticked on the right insole
Size 28 x 28 mm

INTERNAL TONGUE LABEL

onto the lining inside
Size 50 x 15 mm

SIZE & BRAND

onto the outsole bottom

PACKAGING

**SPARCO TEAMWORK BOX**

in cardboard blue-white-orange
and protective inner tissue paper
Size 343x205x118 mm

EXTERNAL LABEL

upon the prepared side of the box, reporting product's feature,
Certification, production date, batch number, code, QR-code and Barcode
Size 105x60 mm